

Email: [bdq@berkshiredesigns.com](mailto:bdq@berkshiredesigns.com)  
Web: <http://www.berkshiredesigns.com>



This drawing is not intended nor shall it be used for construction purposes unless the signed professional seal of a registered landscape architect or civil engineer employed by The Berkshire Design Group, Inc. is affixed above.

© Copyright The Berkshire Design Group, Inc.  
This drawing and all of its contents are the express property of The Berkshire Design Group, Inc., and shall not be copied or used in any way without the written consent of The Berkshire Design Group, Inc.

North Street &  
Northern Avenue  
Northampton, Massachusetts

FOR PERMIT REVIEW ONLY  
NOT FOR CONSTRUCTION  
April 14, 2009

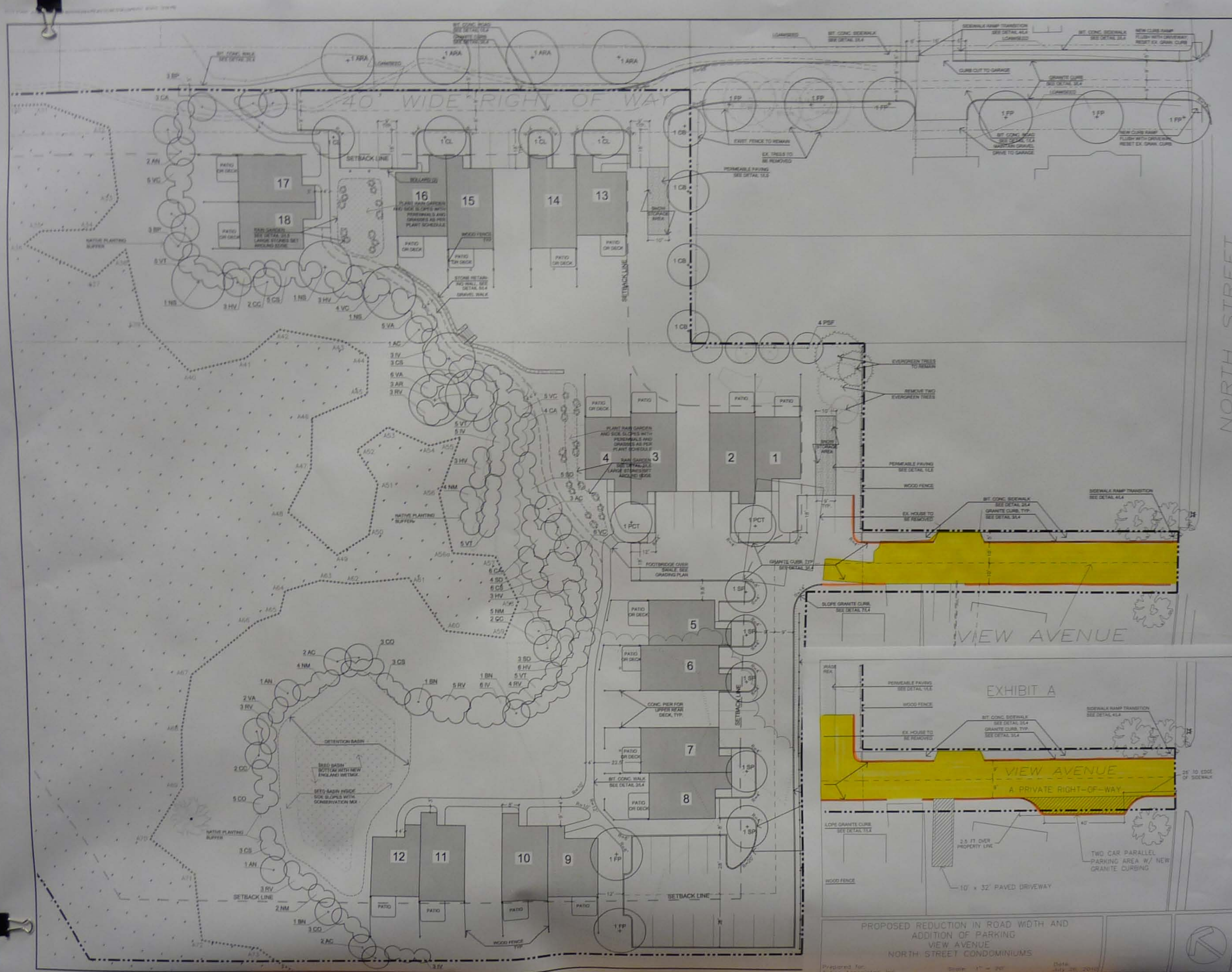
### Layout and Planting Plan

<b>Revisions</b>	
06.15.09 REVISIONS	
Date:	April 14, 2008
Scale:	1"=20'
Drawn By:	JML/WCD
Checked By:	

Sheet Number:

# L2a

**L2a**

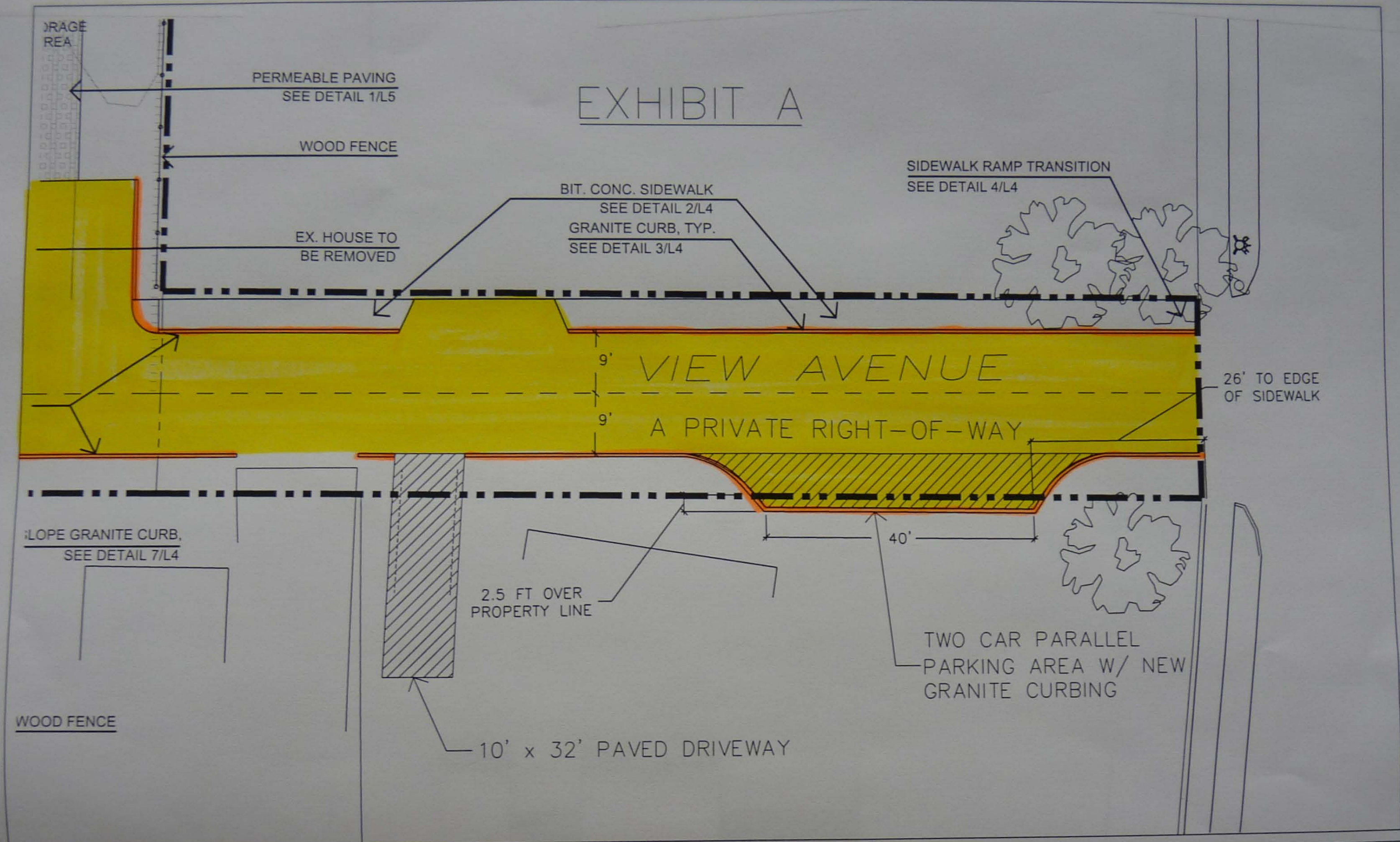








# EXHIBIT A

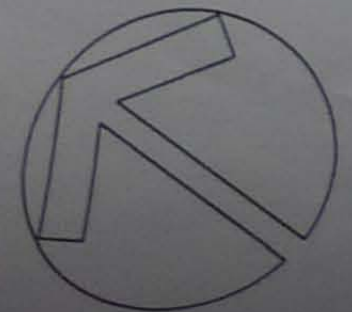


PROPOSED REDUCTION IN ROAD WIDTH AND  
ADDITION OF PARKING  
VIEW AVENUE  
NORTH STREET CONDOMINIUMS

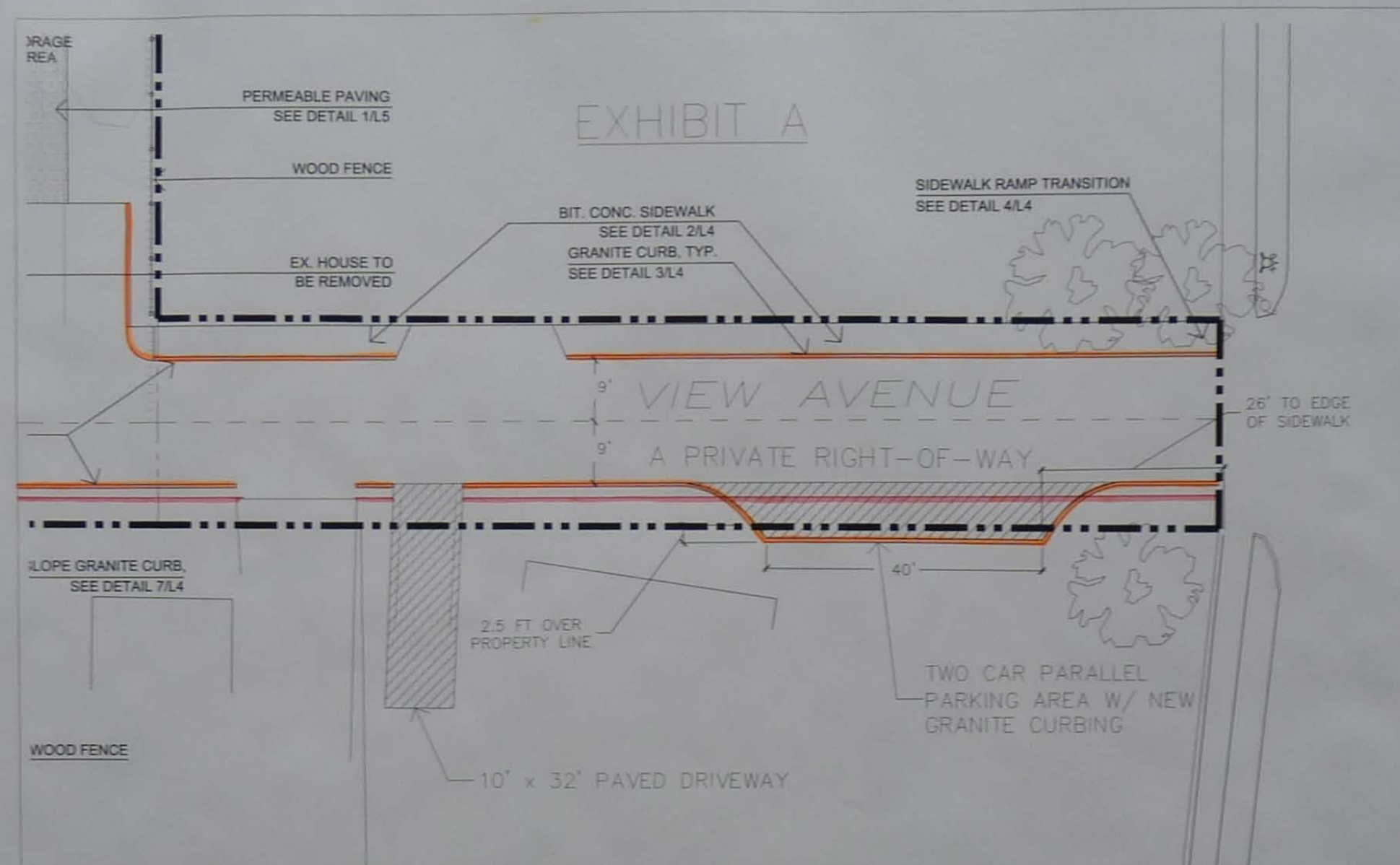
Prepared for:  
Tofino Associates, Inc.

Scale: 1" = 20'

Date:  
July 26, 2010







PROPOSED REDUCTION IN ROAD WIDTH AND  
ADDITION OF PARKING  
VIEW AVENUE  
NORTH STREET CONDOMINIUMS

Prepared for:  
Tafino Associates, Inc.

Scale: 1" = 20'

Date:  
July 26, 2010





ORAGE  
REA

PERMEABLE PAVING  
SEE DETAIL 1/L5

WOOD FENCE

EX. HOUSE TO  
BE REMOVED

BIT. CONC. SIDEWALK  
SEE DETAIL 2/L4  
GRANITE CURB, TYP.  
SEE DETAIL 3/L4

SIDEWALK RAMP TRANSITION  
SEE DETAIL 4/L4

VIEW AVENUE

A PRIVATE RIGHT-OF-WAY

26' TO EDGE  
OF SIDEWALK

SLOPE GRANITE CURB,  
SEE DETAIL 7/L4

WOOD FENCE

2.5 FT OVER  
PROPERTY LINE

40'

TWO CAR PARALLEL  
PARKING AREA W/ NEW  
GRANITE CURBING

10' x 32' PAVED DRIVEWAY

PROPOSED REDUCTION IN ROAD WIDTH AND  
ADDITION OF PARKING



## Tofino Associates, Inc.

31 Campus Plaza Road, Hadley, MA 01035

p.(413) 256-0321

f.(413) 256-0130

August 3, 2010

Northampton Planning Board  
City Hall  
212 Main Street  
Northampton, MA 01060

RE: View Avenue Width Reduction  
North Street Condominiums  
Map 25C, Parcels 12 & 17

Dear Members of the Planning Board,

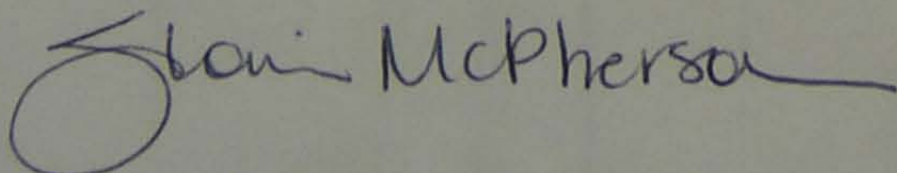
I am writing to request a reduction in the approved width of View Avenue, a private roadway within the North Street Condominium project.

There is a section of View Avenue, from the intersection with North Street to the interior cross street within the project, that is 20 feet wide. All other roadways within the project, including the other access road that intersects with North Street, are 18 feet wide. We respectfully request that the Planning Board approve the reduction in width of View Avenue from the approved 20 feet to 18 feet. It is my understanding the Carolyn Misch has already received word from the DPW that they do not see any issues with the reduction in road width.

I have enclosed a plan showing View Avenue at 18 feet wide. The plan also shows additional parallel parking for two cars along the western side of View Avenue. This parking is part of a settlement agreement of the Land Court lawsuit with the adjacent property owner. The parking will also ensure that the tenants can continue to park their cars within a portion of the View Avenue R-O-W without any conflicts with the access to the condominium project.

Please feel free to contact me at the above phone number if you should have any questions regarding this request.

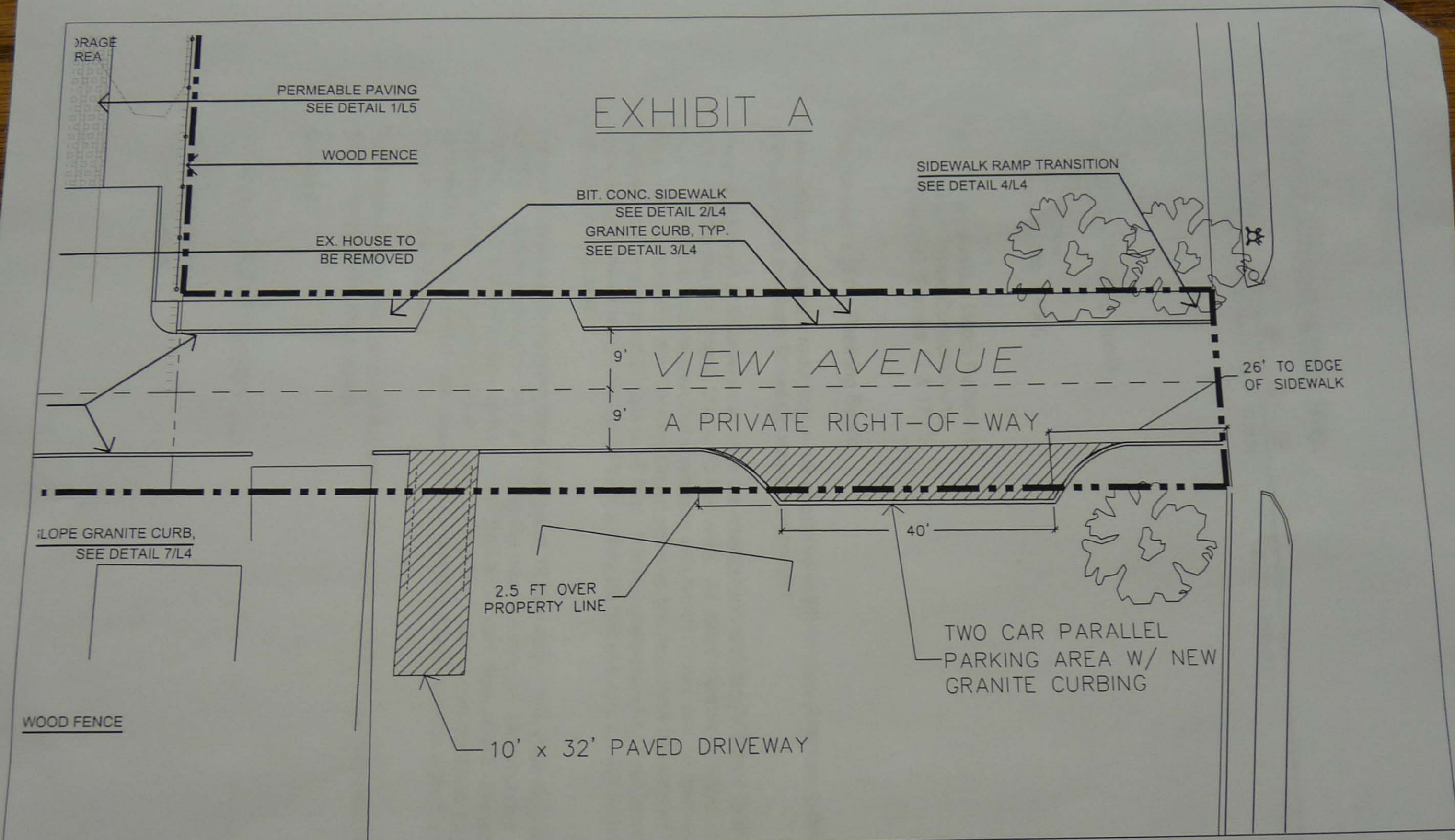
Sincerely,



Gloria McPherson  
Project Manager



# EXHIBIT A



## PROPOSED REDUCTION IN ROAD WIDTH AND ADDITION OF PARKING VIEW AVENUE NORTH STREET CONDOMINIUMS

Prepared for:  
Tofino Associates, Inc.

Scale: 1" = 20'

Date:  
July 26, 2010

